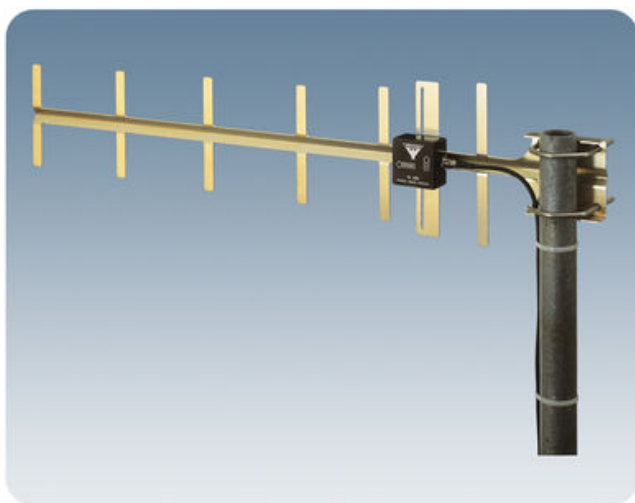


YA 900

Low-Cost Holiday and Weekend Cottage Directional Antenna for Cellular Networks in the 900 MHz Band

DESCRIPTION

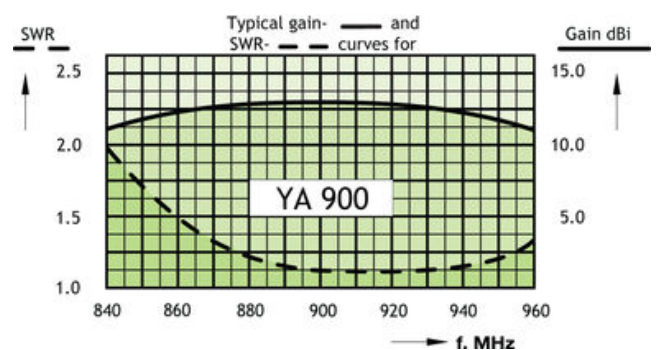
- Low-cost and low-weight directional antenna.
- Ideal for use on caravans, mobile homes and at weekend cottages.
- Significant improvement of the quality of the mobile communication in areas with unsatisfactory coverage (YA 900 to be directed towards the nearest base station).
- Approx. 10 dBd gain.
- For use with 900 MHz cellular networks (EGSM, NMT-900, ETACS).
- For mobile telephones being used in "semi-stationary" installations.
- "Built-in" mounting bracket.
- Supplied with fittings and bolts for mounting on 30 - 50 mm diameter mast tube.



SPECIFICATIONS

ELECTRICAL	
MODEL	YA 900
ANTENNA TYPE	7-element Yagi-antenna
FREQUENCY	870 – 960 MHz
IMPEDANCE	Nom. 50 Ω
POLARISATION	Linear (vertical or horizontal dep. on orientation)
GAIN	12 dBi 10 dBd
FRONT-TO-BACK-RATIO	≥ 15 dB
HALF-POWER BEAMWIDTH	Approx. 50° (H-plane)
BANDWIDTH	100 MHz
SWR	≤ 1.5
MAX. POWER	25 W
MECHANICAL	
MATERIALS	Antenna: Gold aludine, Aluminium Fittings: Stainless steel
COLOUR	Aludine "gold"
TOTAL LENGTH	710 mm
HEIGHT	170 mm
WEIGHT	315 g
CONNECTORS	FME-connector (cable to be ordered separately)
MOUNTING	On 30–50 mm dia. mast tube

TYPICAL GAIN AND SWR CURVES



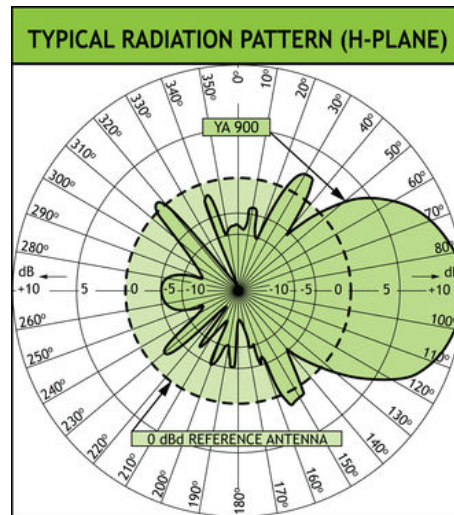
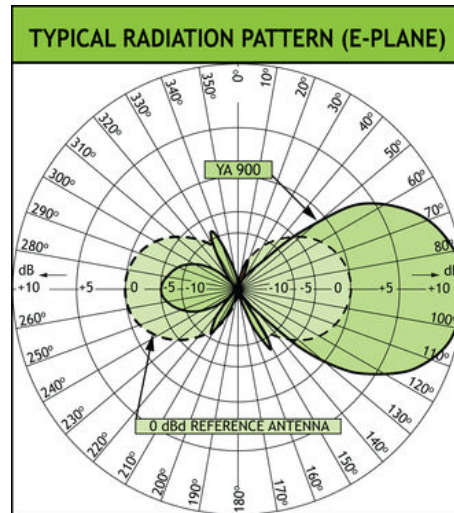
HOW TO USE THE ANTENNA

With the YA 900 you will experience a significant improvement of the quality of your communication on the 900 MHz cellular networks (EGSM, NMT-900, ETACS ect.). The antenna makes it possible to use your mobile telephone in areas with a poor coverage and where it is sometimes very difficult to obtain and maintain a satisfactory connection. The YA 900 is ideal for use on caravans, mobile homes, at weekend cottages and other places where the mobile telephone is used in "semi-stationary" installations.

INSTALLATION STEPS

- Mount the antenna on a 30 - 50 mm diameter mast tube using the accompanying fittings and bolts (see illustration on the other page). The antenna is to be oriented as indicated on the connection box of the antenna.
- Connect the antenna to the mobile telephone using an FME-cable of appropriate length and an adapter for connection of an exterior antenna to the handportable.
- Direct the antenna towards the nearest base station for the 900 MHz cellular network in question. The correct direction may be determined using the field strength indicator on the mobile telephone:
 - Turn on the telephone and note the field strength level on the indicator.
 - Rotate the antenna (in the horizontal plane) while observing the field strength indicator.
 - Choose the direction in which the highest field strength level is observed and fasten the antenna.

TYPICAL RADIATION PATTERN



PROCOM A/S reserve the right to amend specifications without prior notice.

16/03/2010